

GRASS PAVERS

INSTALL IN 5 EASY STEPS:

Orientation and laying pattern of units

The grass paver units should be placed in direct contact with the ground. When correctly placed, the tabs will be at the bottom of the grass paver units. A bricklayer pattern as shown in Figure 1 is recommended.

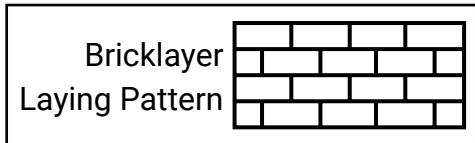


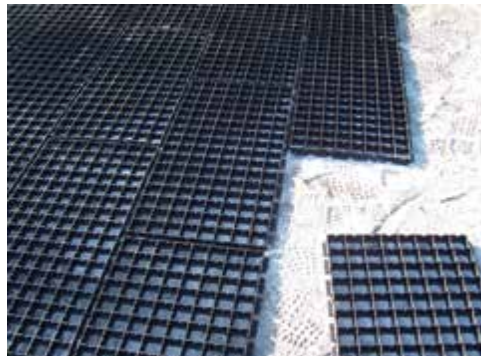
FIGURE 1

1

Prepare ground

A 2-inch base is required for pedestrian traffic. A 6-inch base is required for vehicle traffic. The base is a mix of 2/3 clean, angular stone (3/8-inch to 1-inch diameter) and 1/3 topsoil.

- Excavate down 3.25 inches or 7.25 inches (allowing for base depth and the 1.25-inch panel depth) in the area where you will be laying the panels.
- Install the pre-mixed base, then compact.



2

Position the units

- When positioning units adjacent to a firm surface (such as an existing concrete paved area), place the first row about one inch away from the edge of the existing firm surface.
- Slide the units together so that the interlocking tab joint is engaged, as illustrated in Figure 2. The top of the panels should be slightly below (1/4-inch) any adjacent hard surfaces or the surrounding finished grade.

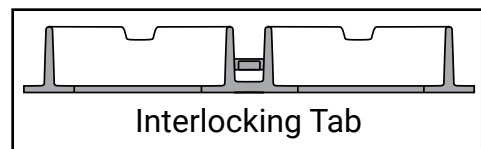


FIGURE 2

MATERIALS INCLUDED IN KIT:

- (5) grass paver units

OTHER MATERIALS NEEDED:

- 1-inch to 1.5-inch deck screws
- Drill



3**Anchor the units**

- Screw 1-inch to 1.5-inch deck screws through overlapping tabs, one per short side, two per long side, to prevent the units from sliding during installation and prior to vegetation establishment.

4**Infill the grass paver units**

Infilling should take place immediately after the units are installed to minimize separation of the interlocking tabs or upward buckling caused by weather-related expansion and contraction.

5**Plant grass or lay sod**

Infill the units with topsoil just to the top of the cell walls. DO NOT overfill. The topsoil will compact slightly over time and reduce in height within the cell. This creates the ideal environment for protecting the roots of the vegetation within the cell walls from potential damage by vehicle loading. Next, lay sod or spread a generous amount of grass seed over the top. Follow seeding, fertilizing, and watering instructions for growing healthy grass in your area. If your soil drains easily, you will need to water more often.

MAINTENANCE**Lawn maintenance**

Normal lawn care procedures should be followed, including dethatching and aerating. Some equipment may slightly scar or cut the wall structure of the grass paver, but should not affect overall structural integrity of the drive-on grass paver system.

Snow removal

When snow removal is required, keep a metal-edged plow blade from coming into contact with the surface of the pavers to avoid causing damage to the pavers and the grass.

